

Mardi 24 mai
#2016

Rencontre de la Communauté Pentaho

Par Atol Conseils & Développements

PARIS // FRANCE



Pentaho Enterprise v6

24 Mai 2016

1. Analyzer

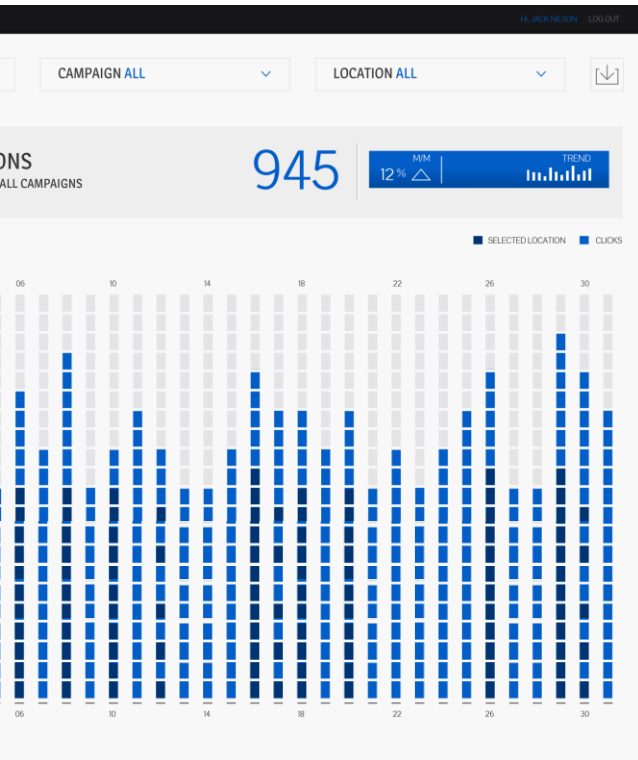
- Au sein de PDI pour AgileBI
- Analytique embarqué - API
- Partager des calculs entre utilisateurs

2. Big Data – Data Pipeline

- Metadata Injection
- Service de données
- Datamart à la demande

3. A vous de jouer !

- Tester l'application « BioMe »
- CE vs EE:
la liste comparative technique

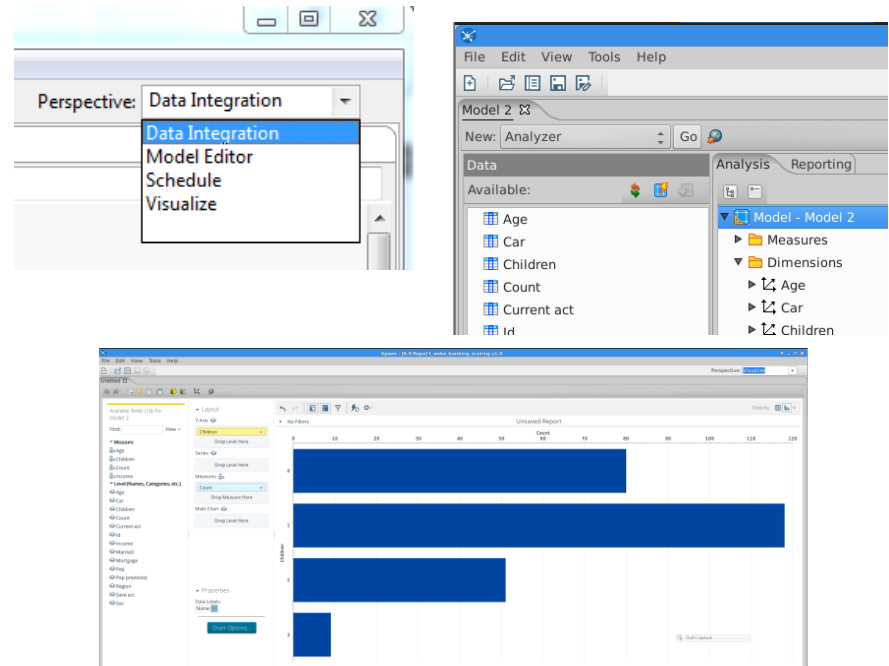


Analyzer

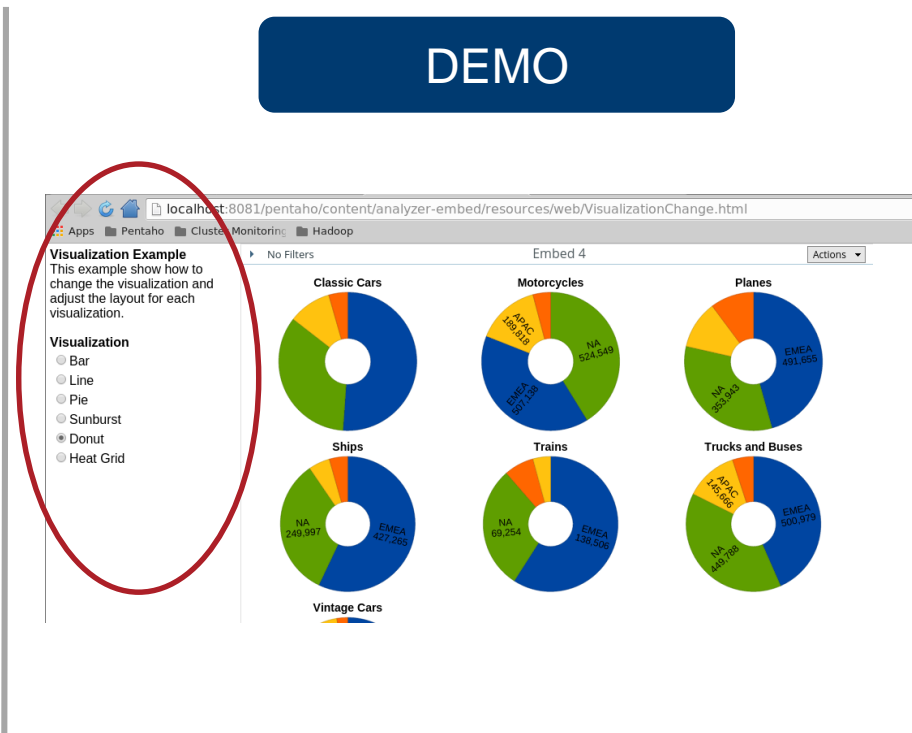
Visualiser partout à tout moment

- DI & BA « Better together »
 - Repository unique
 - Utilisation de BA dans DI
 - Les perspectives de PDI
 - Modélisation et publication de modèle depuis PDI
 - Je visualise mes données avec **Analyzer**

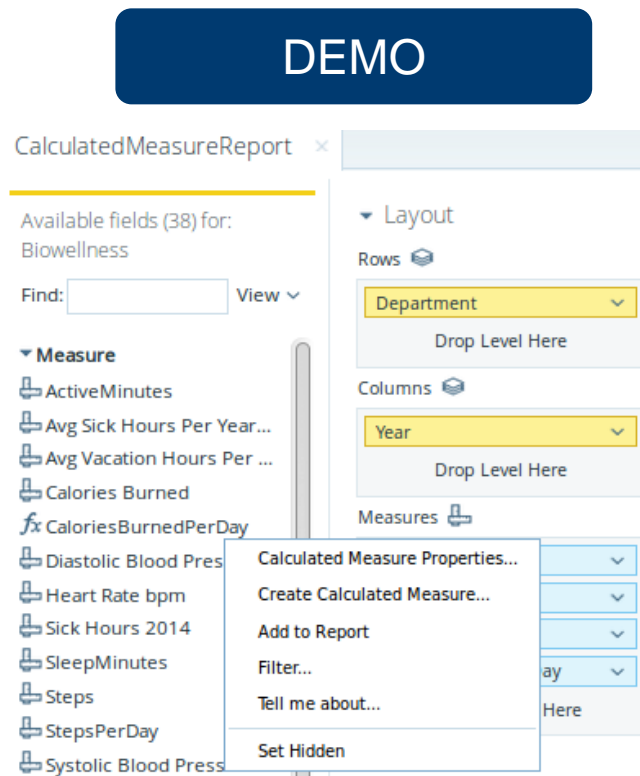
DEMO



- Embarquer l'analytique dans vos applications
 - Pas de passage par les infocentres
 - Piloter **Analyzer**
 - Les APIs
 - Les contrats OEM



- En qualité d'utilisateur, je modifie un modèle sans besoin de l'IT
- Ajout de mesures dans le modèle directement depuis Analyzer



DEMO

CalculatedMeasureReport

Available fields (38) for:
Biowellness

Find: View ▾

▼ Measure

- ActiveMinutes
- Avg Sick Hours Per Year...
- Avg Vacation Hours Per ...
- Calories Burned
- CaloriesBurnedPerDay
- Diastolic Blood Pres
- Heart Rate bpm
- Sick Hours 2014
- SleepMinutes
- Steps
- StepsPerDay
- Systolic Blood Press

Layout

Rows

Department

Drop Level Here

Columns

Year

Drop Level Here

Measures

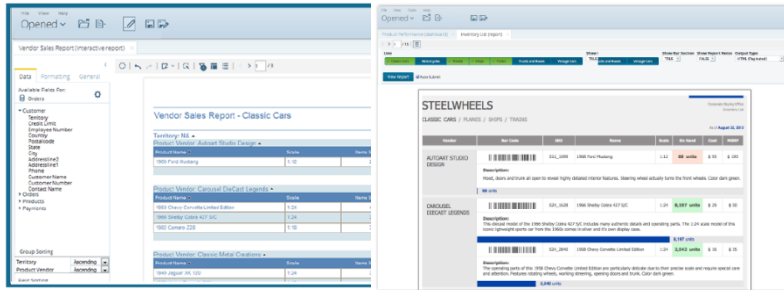
- Calculated Measure Properties...
- Create Calculated Measure...
- Add to Report
- Filter...
- Tell me about...
- Set Hidden

Visualisation 100% web pour les métiers

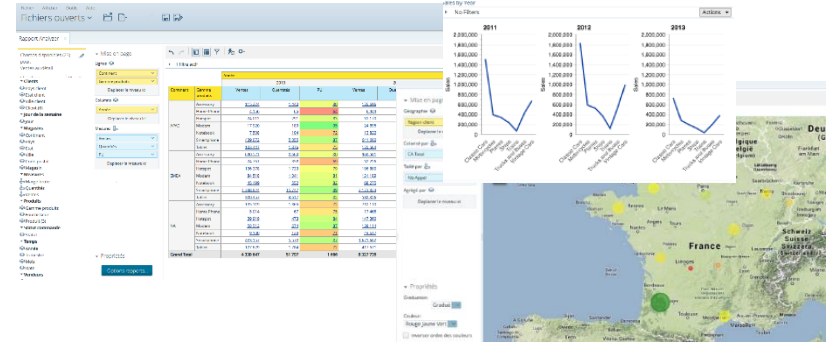
Renforcer l'autonomie des utilisateurs



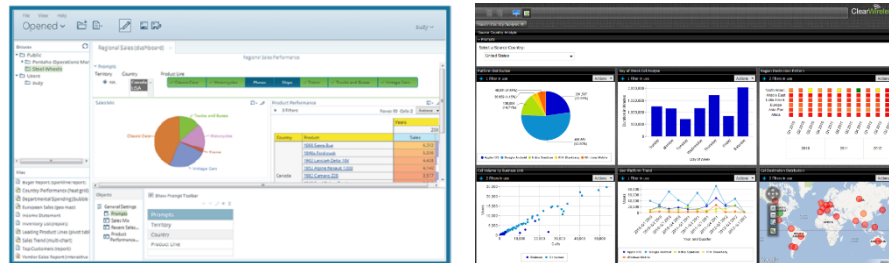
■ Rapport: Interactive Report

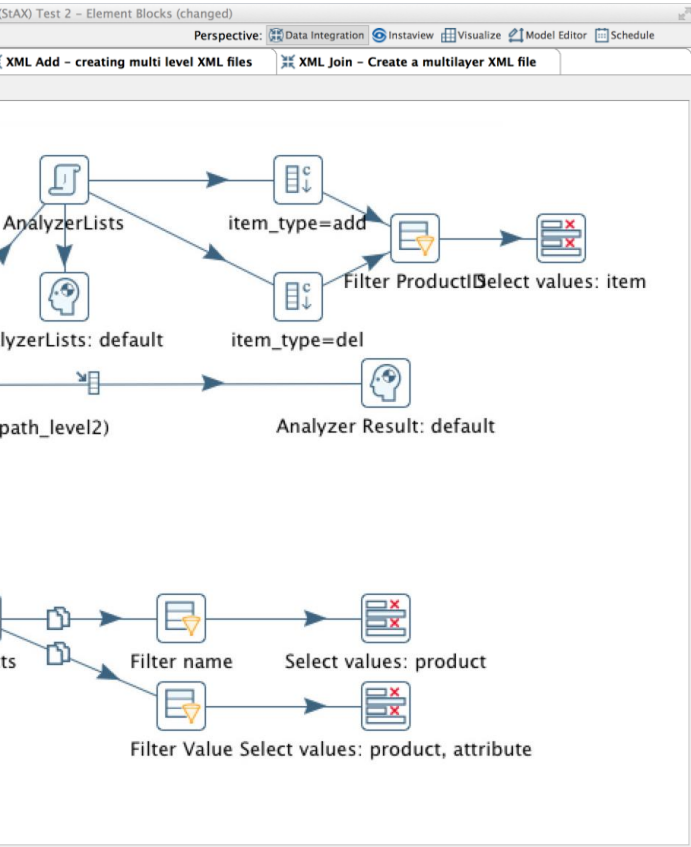


■ Discovery: Analyzer



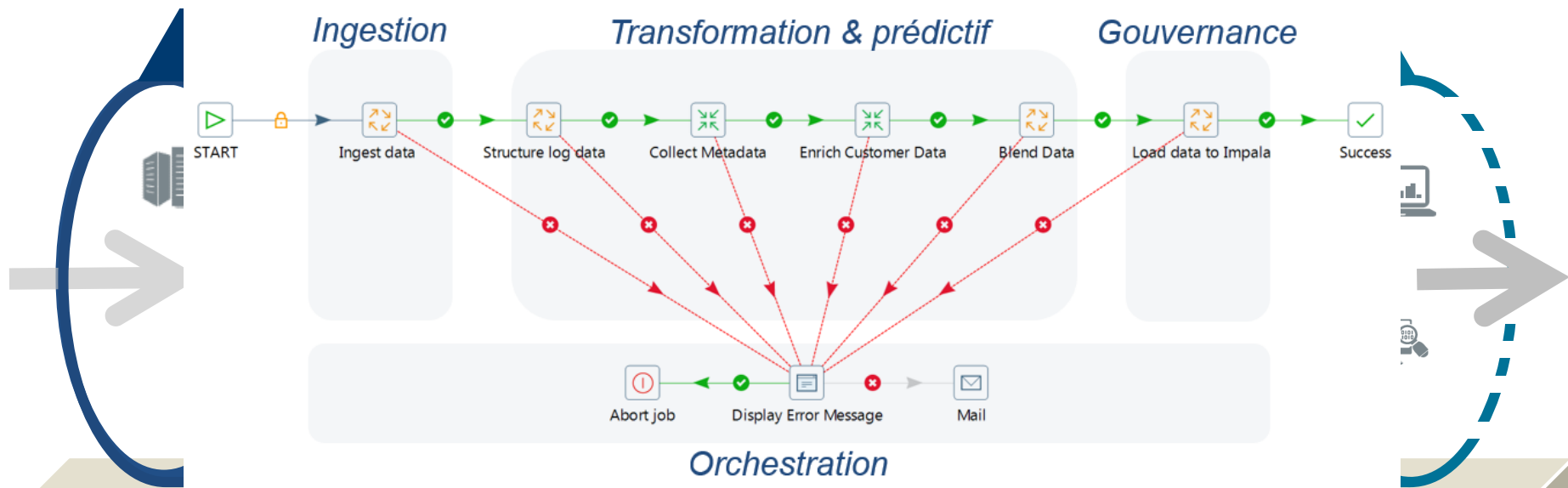
■ Tableau de bord: Dashboard Designer





Data Pipeline

Le Big Data de bout en bout



Gestion et automatisation du Pipeline

Administration

Securité

Cycle de vie

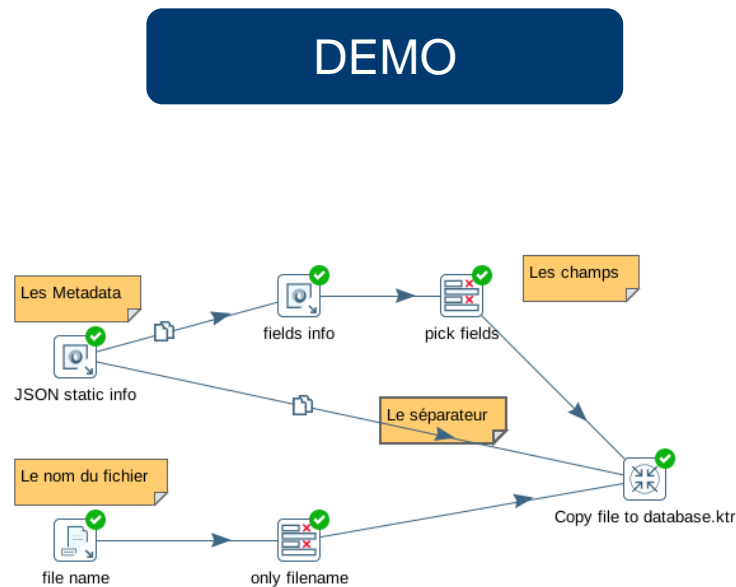
Provenance
des données

Data Pipeline
Dynamique

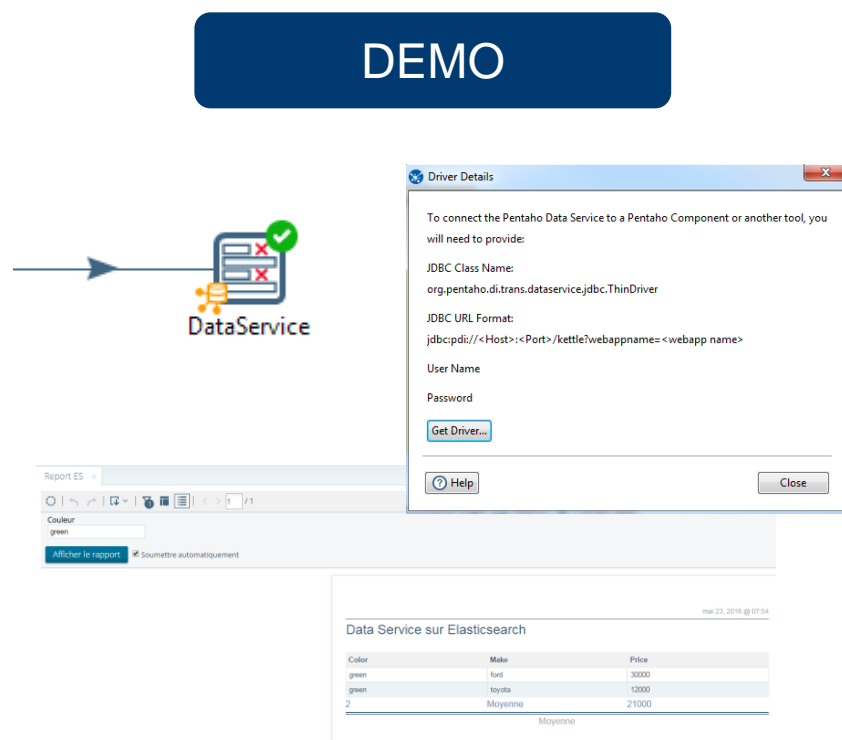
Monitorer

Automatiser

- Ingérer efficacement
- PDI auto génère différentes Transformation automatiquement en fonction de vos Metadata
- Solution pour alimenter les DataLake mais bien plus...



- Proposer une solution durant les phases d'étude
- Alimenter directement une application
- Source de données JDBC pour tout outil de reporting
- Interactivité avec gestion des paramètres



The screenshot shows the Pentaho Data Service configuration interface. A blue button labeled "DEMO" is at the top. Below it is the "DataService" icon, which is a document with a green checkmark and a red 'X'. An arrow points from the icon to the "Driver Details" dialog box. The dialog box contains the following text:

To connect the Pentaho Data Service to a Pentaho Component or another tool, you will need to provide:

JDBC Class Name:
org.pentaho.di.trans.dataservice.jdbc.ThinDriver

JDBC URL Format:
jdbc:pdj://<Host>:<Port>/kettle?webappname=<webapp name>

User Name
Password

Below the dialog box, there is a report viewer showing a report titled "Report ES". The report content is:

Couleur
green

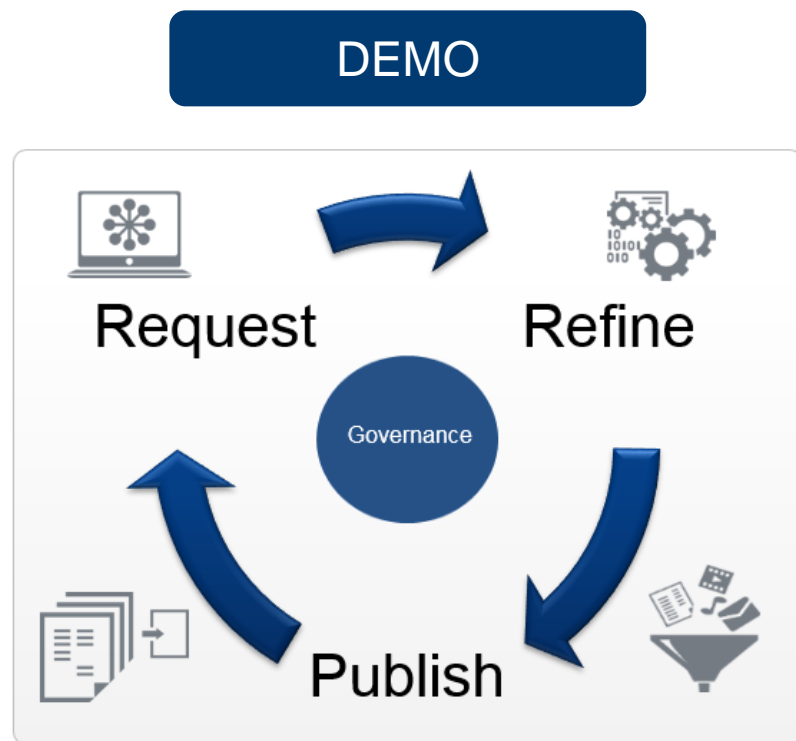
Soumettre automatiquement

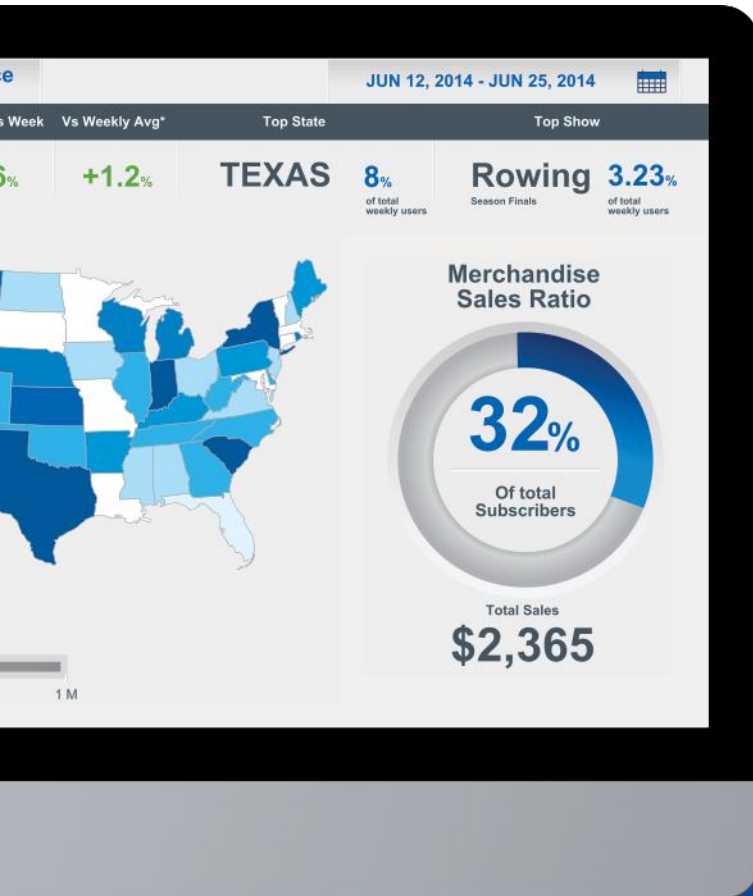
At the bottom right, there is a table titled "Data Service sur Elasticsearch" with the following data:

Color	Make	Price
green	ford	30000
green	toyota	10000
2	Moyenne	21000

Moyenne

- Donner de l'autonomie aux utilisateurs pour générer leurs propres Metadata
- Séquences:
 - Je demande
 - PDI réalise
 - Je consomme avec Analyzer
- SDR (Streamline Data Refinery)





A vous de jouer !

- BioMe
- Fonctions EE vs CE

<http://www.webdetails.pt/pentaho/api/repos/BioMe/webapp/index.html?userid=pentaho&password=demo#/analytics/refine>



Interactive
BioMe Demo

Harnessing fitness device data to deliver high-value analytics to healthcare institutions.

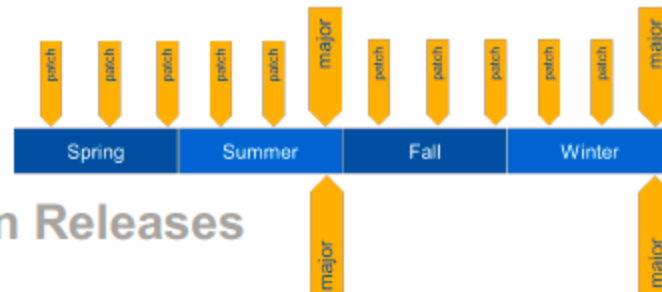
Vidéo en Français disponible sur mon blog
<https://opentoile.com/2016/03/14/biome-application-analytique-big-data/>



- **BioMe:**
Une société fictive devant offrir de l'analytique depuis des objets connectés
- CTOOLS + PDI
= SDR

■ Support

Enterprise Edition Releases



Community Edition Releases

■ Fonctionnalités

Feature	CE	EE
Pentaho Data Integration		
DI-Services		
- Job Restart		X
- Transactional Job Execution		X
- Load balancing of transformations		X
- Content Repository	X	X
- Version Control	X	X
- User / Role Security (Pentaho Security)	X	X
- Database Security	X	X
- Purge Utility	X	X
- DI-Scheduling		X
Innovation & Big Data		
- Data Services	X	X
- Carte on Yarn		X
- SDR (Auto modeling and Publish)		X
Monitoring & Auditing		
- PDI Operations Mart		X
- SNMP Monitoring		X
Security & Big Data		
- AES Password Support		X
- Kerberos Support for Hadoop		X
- Hadoop HA Support		X
Special topics		

Feature	CE	EE
- Agile BI		X
- JMS		X
- IBM MQ Support		X
- Splunk Support		X
- SAP Hana Bulk Loader		X
Pentaho Data Science Pack		
- R API plugin	X	X
- R Script Executor		X
- Weka Forecasting Plugin		X
- Weka Machine Learning Plugin		X
Pentaho Business Analytics Server		
Analyzer		
- General Analyzer Functionality		X
- Native Integration with MongoDB		X
- Geo Plugin		X
- Distributed Cache for Mondrian		X
Dashboards		
- General Dashboard Functionality		X
- Chart Editor		X
- Open Flash Chart (including Dial Chart)		X
Reporting		
- Interactive Reporting		X
Platform Administration & Auditing		

Feature	CE	EE
- Migration Tool		X
- JDBC Distribution Utility		X
- Audit Reporting (Operations Mart)		X
- Platform Mobile Support		X



Merci

Sebastien Cognet
Ingénieur Commercial
+33 6 08 52 77 22
scognet@pentaho.com
@opentoile